



## Coney Close, Thetford, IP24 3PE

### Offers in Excess of £260,000

Nestled in the tranquil Coney Close, Thetford, this charming four-bedroom semi-detached house offers a perfect blend of comfort and potential. Built between 2000 and 2009, the property boasts a modern design that is ready for you to make it your own.

As you enter, you are welcomed by two spacious reception rooms, ideal for both entertaining guests and enjoying quiet family evenings. The open-plan living area features a cosy lounge that overlooks a picturesque woodland, providing a serene backdrop for your daily life. The large rear garden is a true highlight, offering ample space for outdoor activities and relaxation, all while enjoying the beauty of nature.

The home comprises four well-proportioned bedrooms, including bedroom one complete with an ensuite bathroom for added convenience. A downstairs WC further enhances the practicality of this delightful residence.

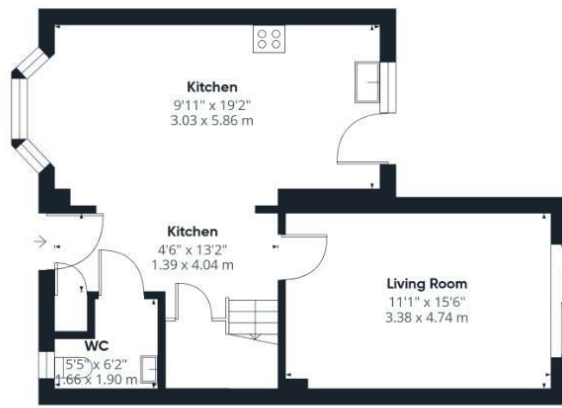
With off-road parking for one vehicle and a garage en-bloc, this property is not only functional but also conveniently located for easy access to local amenities and transport links.

This semi-detached house is a wonderful opportunity for those looking to create their dream home in a peaceful setting. Whether you are a growing family or simply seeking more space, this property is ready for someone to put their own stamp on it. Don't miss the chance to make this lovely house your new home.

- ENSUITE TO MASTER BEDROOM
- CUL-DE-SAC POSITION
- FAMILY HOME
- FOUR BEDROOMS
- GARAGE & OFF ROAD PARKING
- EASY ACCESS TO A11
- NEAR TO RIVER WALKS AND TOWN
- LARGE REAR PLOT
- OPEN PLAN KITCHEN/DINER
- VIEWINGS ADVISED



Council Tax Band: C - EPC Rating: C



Ground Floor



Floor 1

**Approximate total area<sup>(1)</sup>**  
997 ft<sup>2</sup>  
92.8 m<sup>2</sup>

(1) Excluding balconies and terraces

Calculations reference the RICS IPMS 3C standard. Measurements are approximate and not to scale. This floor plan is intended for illustration only.

GIRAFFE 360

